

# RHI-3-0028

Height adjustable cart with Drawer, Shelf, DIN Rails, Gel and Scanner holder

## Rhino Range



*Ergonomic*



*Easy to clean*



*Multi purpose*



*Lifetime warranty*



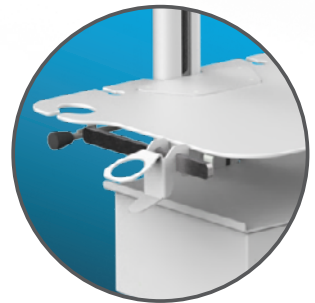
*Quick setup*



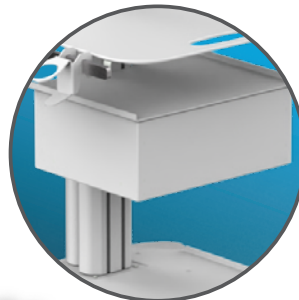
## FEATURES



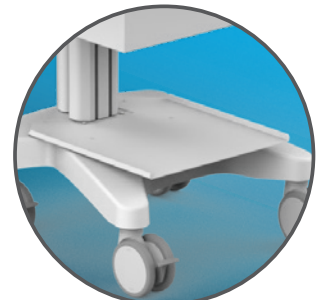
*Designed and manufactured in Hungary, products are typically 100% recyclable and upgradable in the future. Raw materials are sourced locally or in the EU.*



*DIN Rails to hold accessories*



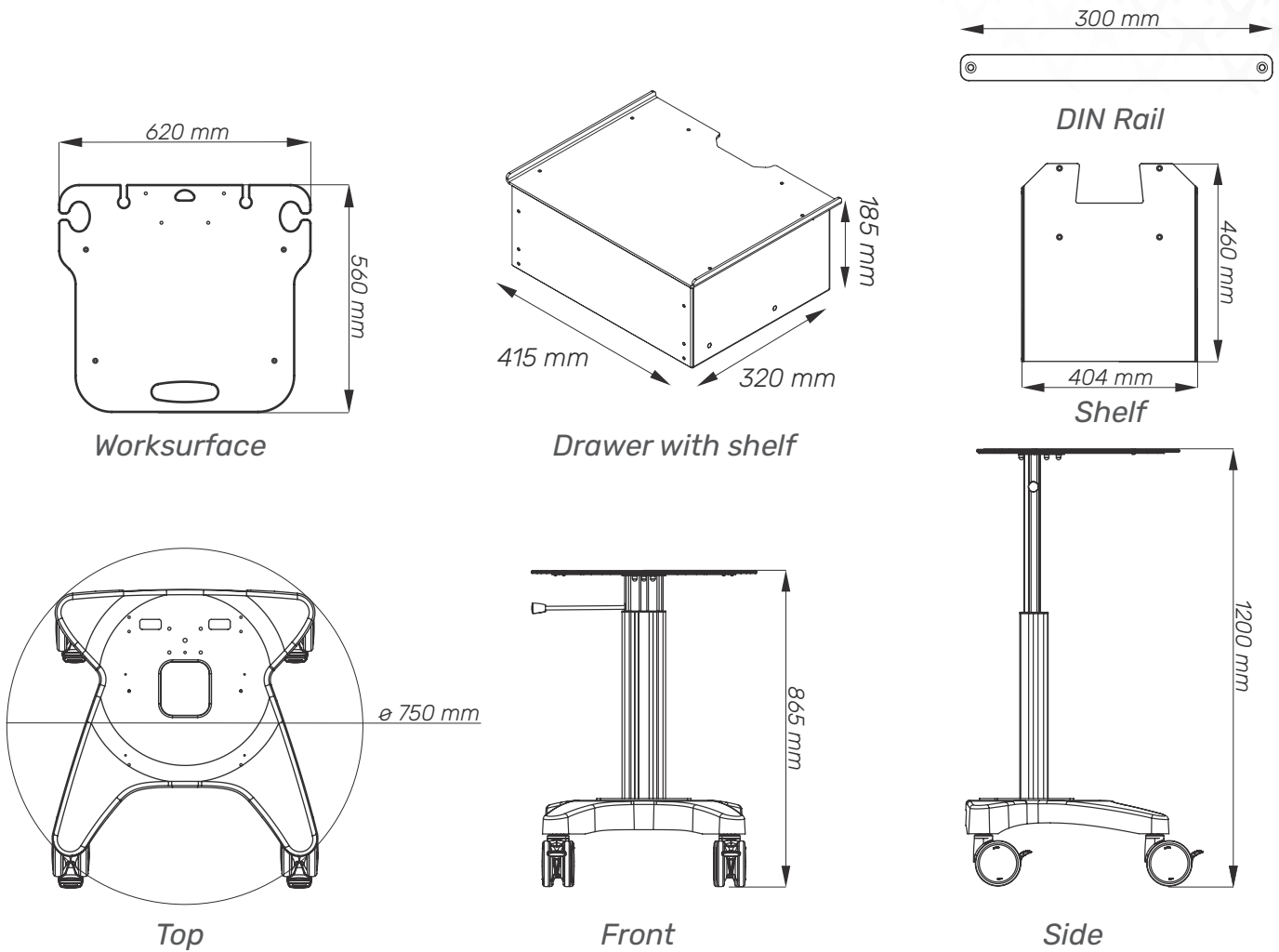
*Push to open drawer*



*Shelf*

# Cart Properties

Dimensions and mechanical data



## Mechanical data

Height	Min.: 865 mm Max.: 1200 mm
Wheelbase dimension	750 mm (diameter)
Work surface dimensions	Width: 620 mm Height: 560 mm
Wheels/locking	2 lockable, 125mm diameter
Loading capacity	80 kg

## Construction

Main material	Aluminium
---------------	-----------

## Color

RAL 9016	
Custom color	

## Certificates

Certificates conforms to	IEC60601-1:2012 (Edition 3)
CE	Rohs compliant