

CHAMELEON CART SOLUTIONS

cart!up



CORE PRODUCTS

CHA4-0

BASIC CHAMELEON 4 CART

- B1 base - 25kg max loading capacity, 100mm wheels
- WS6 work surface



CHA4-1
DISPLAY MOUNT



CHA4-2
TABLET MOUNT



CHA4-3
LAPTOP MOUNT

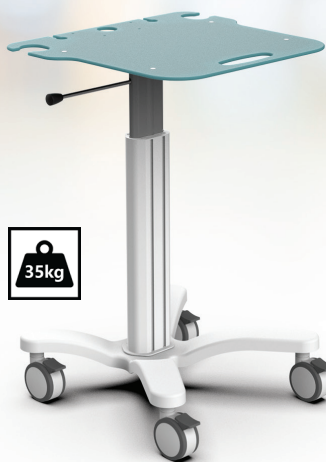


CHA4-4
DISPLAY MOUNT
+
KEYBOARD TRAY

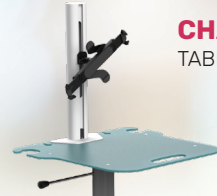
CHA6-0

BASIC CHAMELEON 6 CART

- B3 base - 35kg max loading capacity, 100mm wheels
- WS9 work surface



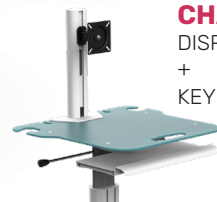
CHA6-1
DISPLAY MOUNT



CHA6-2
TABLET MOUNT



CHA6-3
LAPTOP MOUNT



CHA6-4
DISPLAY MOUNT
+
KEYBOARD TRAY

CHA4-3-B

Budget laptop cart.



CHA4-8

Large work surface cart.



CHA6-4-CPU

Complex workstation with CPU mount, Display mount and Keyboard tray.

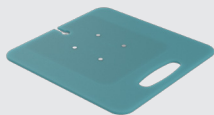


WORKTOP OPTIONS

WS3

Material:
Acryl

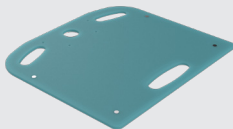
Dimensions:
W: 430mm
D: 450mm
THK: 8mm



WS6

Material:
Acryl

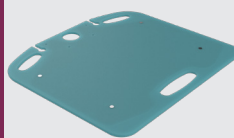
Dimensions:
W: 540mm
D: 485mm
THK: 8mm



WS7

Material:
Acryl

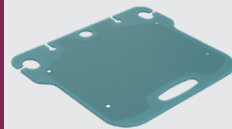
Dimensions:
W: 620mm
D: 560mm
THK: 8mm



WS9

Material:
Acryl

Dimensions:
W: 620mm
D: 560mm
THK: 8mm



WS13

Material:
Acryl

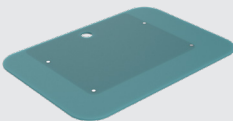
Dimensions:
W: 460mm
D: 340mm
THK: 8mm



WS15

Material:
Acryl

Dimensions:
W: 700mm
D: 500mm
THK: 8mm



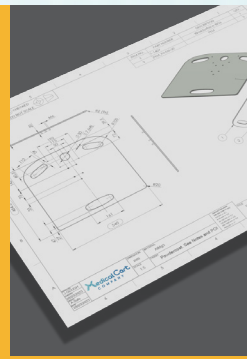
1-0770

Material:
Aluminium

Dimensions:
W: 500mm
D: 560mm
THK: 8mm



**Custom
design
on
request**



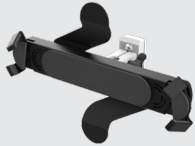
ACCESSORIES

DISPLAY MOUNT



DM 2/5/6/7/8/9

TABLET MOUNT



TM2

CAMERA MOUNT



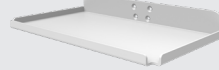
CM1, CM2

STORAGE



ST 1/2/3/5/6/7/8

SHELVES



S 1/2/3/4/6/8/10/11

DRAWERS



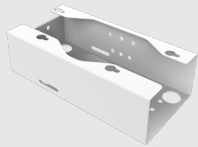
D 1/2/3/4/5/6/7/8/9/10/11

SCANNER HOLDER



SH 1/2/3/4

PSU HOLDER



PSH 1/2/4/5/7/8/9

POWER STRIP



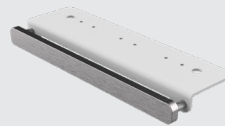
PDU 3/4/5/8

COMPUTER MOUNT



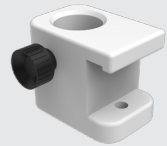
CPU 1/2/3/4

DIN RAIL



DR1, DR3

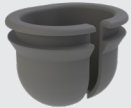
POLE CLAMP



DRC 1/2

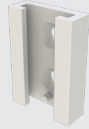
ACCESSORIES

RUBBER HOLDER



SR1, SR2, SR3

HUMIDIFIER MOUNT



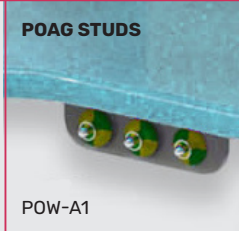
AM1

POAG STUD



POW-A2-15/25

POAG STUDS



POW-A1

CABLE HOOK



CH 1/2/3/4

MOUSE HOLDER



MH1

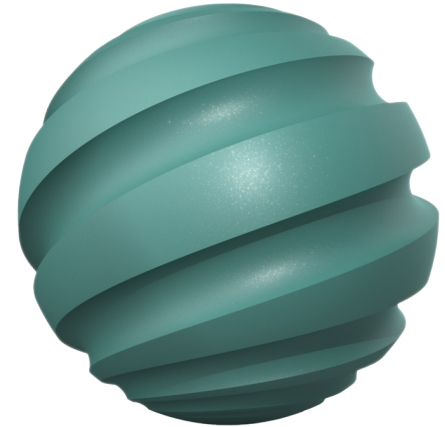
COUNTERWEIGHT



CBW-3, CBW-6

CUSTOM COLORS

We offer the choice of custom colors for the aluminium components from **Tiger 3D metallic range**.



Visit the Tiger webshop and select the color you desire:

<https://www.tiger-coatings.com>

cart!up

MOBILITÁS • FLEXIBILITÁS • HATÉKONYSÁG

CartUp

Web: cartup.hu

Phone: +36 70 638 8583

Email: info@cartup.hu