

GIRAFFE CART SOLUTIONS

cart!up



2025

GENERAL FEATURES



EASY TO CLEAN SURFACES

Clean surfaces without dirt traps.
One wipe cleaning.



QUICK SETUP

Available assembled or
flat-packed, easy to assemble.



8 YEARS WARRANTY

Eight-year warranty for
the care-free treatment.



ERGONOMIC

Designed for easy
and comfortable use.



SMALL FOOTPRINT

Developed to fit narrow doors,
ease of movement.



LOCKABLE WHEELS

Simple locking mechanism
operated by foot.



CORE PRODUCT

GIR6-0

BASIC GIRAFFE CART

- 100mm locking wheels
- B3 base - 35kg max loading capacity
- C5 column



GIR4-0

B1 base -
25kg max loading capacity



GIR7-0

B4 base -
65kg max loading
capacity



GIR8-0

B6 base -
80kg max loading
capacity

3-0220



3-0099



3-0166



3-0140



GIR6-V0



3-0151



3-0221



3-0217

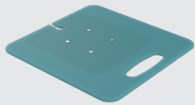


WORKTOP OPTIONS

WS3

Material:
Acryl

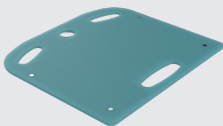
Dimensions:
W: 430mm
D: 450mm
THK: 8mm



WS6

Material:
Aluminium

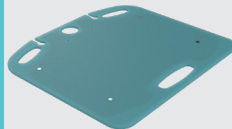
Dimensions:
W: 540mm
D: 485mm
THK: 8mm



WS7

Material:
Acryl

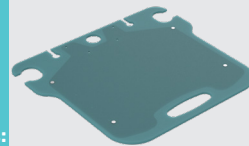
Dimensions:
W: 620mm
D: 560mm
THK: 8mm



WS9

Material:
Acryl

Dimensions:
W: 620mm
D: 560mm
THK: 8mm



1-0995

Material:
Aluminium

Dimensions:
W: 590mm
D: 400mm
THK: 5mm



1-1278

Material:
Aluminium

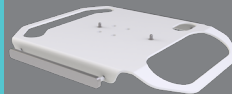
Dimensions:
W: 640mm
D: 500mm
THK: 6mm



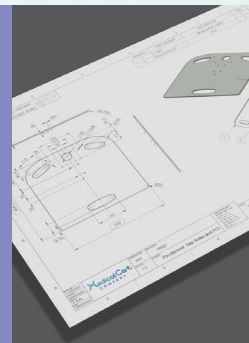
MNT-1

Material:
Aluminium

Dimensions:
W: 430mm
D: 565mm
THK: 6mm



**Custom
design
on
request**



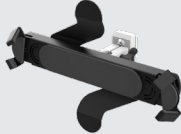
ACCESSORIES

DISPLAY AND CAMERA MOUNT



VES 1/2, DM2, DM7, CM1

TABLET MOUNT



TM2, TM2-XL

QUICK RELEASE



QRA 1/2/3/4/5/6

BASKET



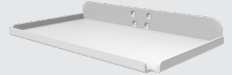
ST 1/2/3/5/6/7/8

GAS BOTTLE HOLDER



GBH 1/4

SHELVES



S 1/2/3/4/6/8/10/11

SCANNER HOLDER



SH 1/2/3/4

PSU HOLDER



PSH 1/2/4/5/7/9

POWER STRIP



PDU 3/4/5/8

COMPUTER MOUNT



CPU 1/2/3/4

DIN RAIL


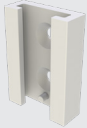
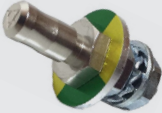







DR3

DRIP POLE

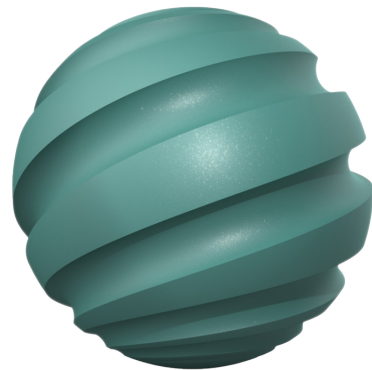


IV1-DRC

<p>RUBBER HOLDER</p>  <p>SR1, SR2, SR3</p>	<p>HUMIDIFIER MOUNT</p>  <p>AM1</p>	<p>POAG STUD</p>  <p>POW-A2-15/25</p>	<p>ISOLATION TRANSFORMER HOLDER</p>  <p>ITH1</p>
<p>CABLE HOOK</p>  <p>CH 1/2/3/4</p>	<p>MOUSE HOLDER</p>  <p>MH1</p>	<p>GEL HOLDER</p>  <p>GH1, GH2, GH3</p>	<p>SNAKE ARM RANGE</p>  <p>SNA1, SNA2</p>

CUSTOM COLORS

We offer the choice of custom colors for the aluminium components from **Tiger 3D metallic range**.



Visit the Tiger webshop and select the color you desire:

<https://www.tiger-coatings.com>

cart!up

MOBILITÁS • FLEXIBILITÁS • HATÉKONYSÁG



CartUp

Web: cartup.hu

Phone: +36 70 638 8583

Email: info@cartup.hu